



Port San Antonio Area Regional Center Community Meeting #1

City of San Antonio
Planning Department
SA Tomorrow Planning Initiatives

January 29, 2019



Auxiliary Marketing Services
Bowtie
Cambridge Systematics, Inc.
Economic & Planning Systems, Inc.
Mosaic Planning and Development Services
Ximenes & Associates

Introductions



Channary Gould, Senior Planner – Project Manager
chan.gould@sanantonio.gov

Bridgett White, Director

Rudy Nino, Assistant Director

<https://portsanantonio.sacompplan.com/>

Meeting Overview

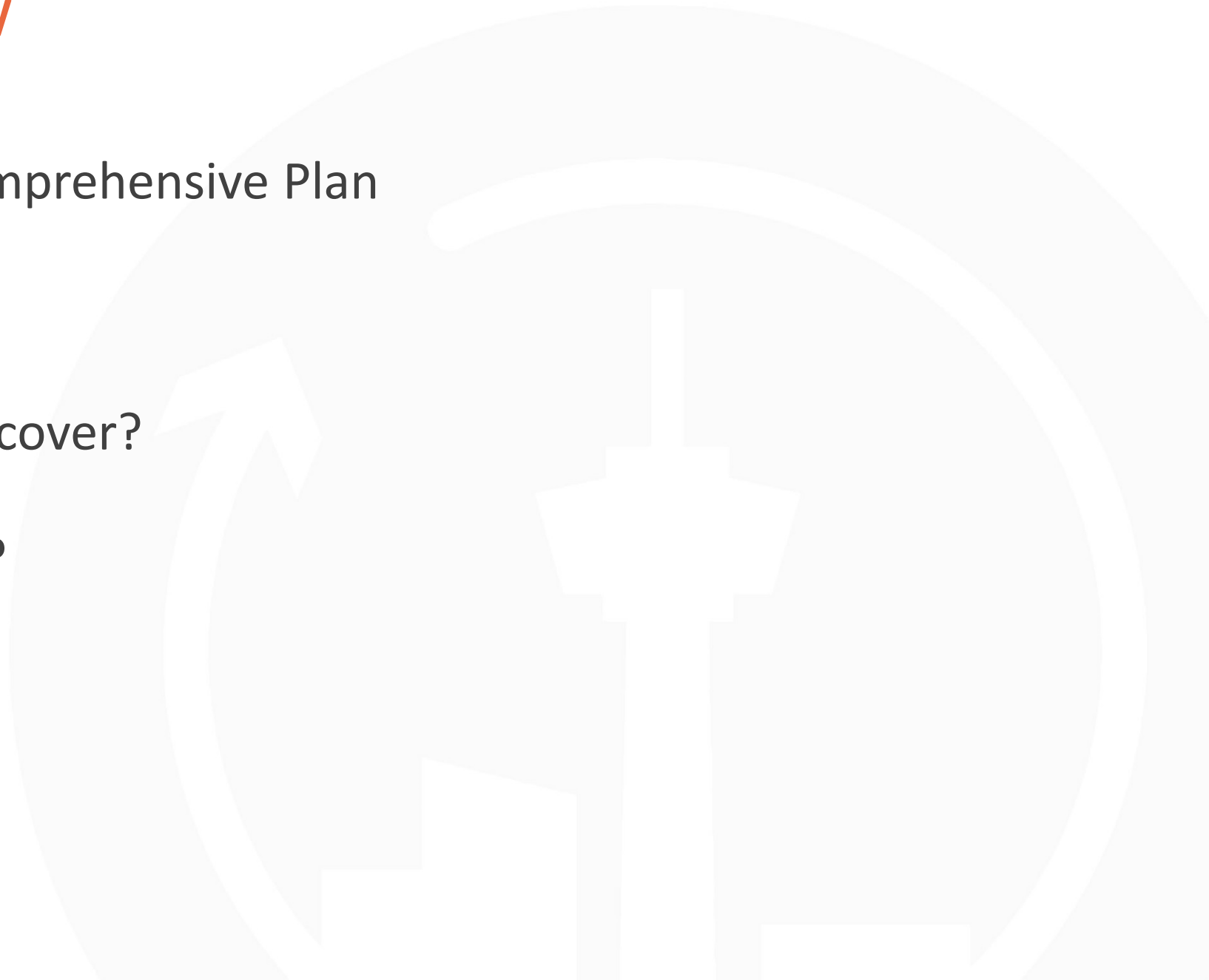
SA Tomorrow and the Comprehensive Plan

What is a Sub-Area Plan?

What topics will our Plan cover?

How can you be involved?

Questions?





SA



TOMORROW

SA Tomorrow Background

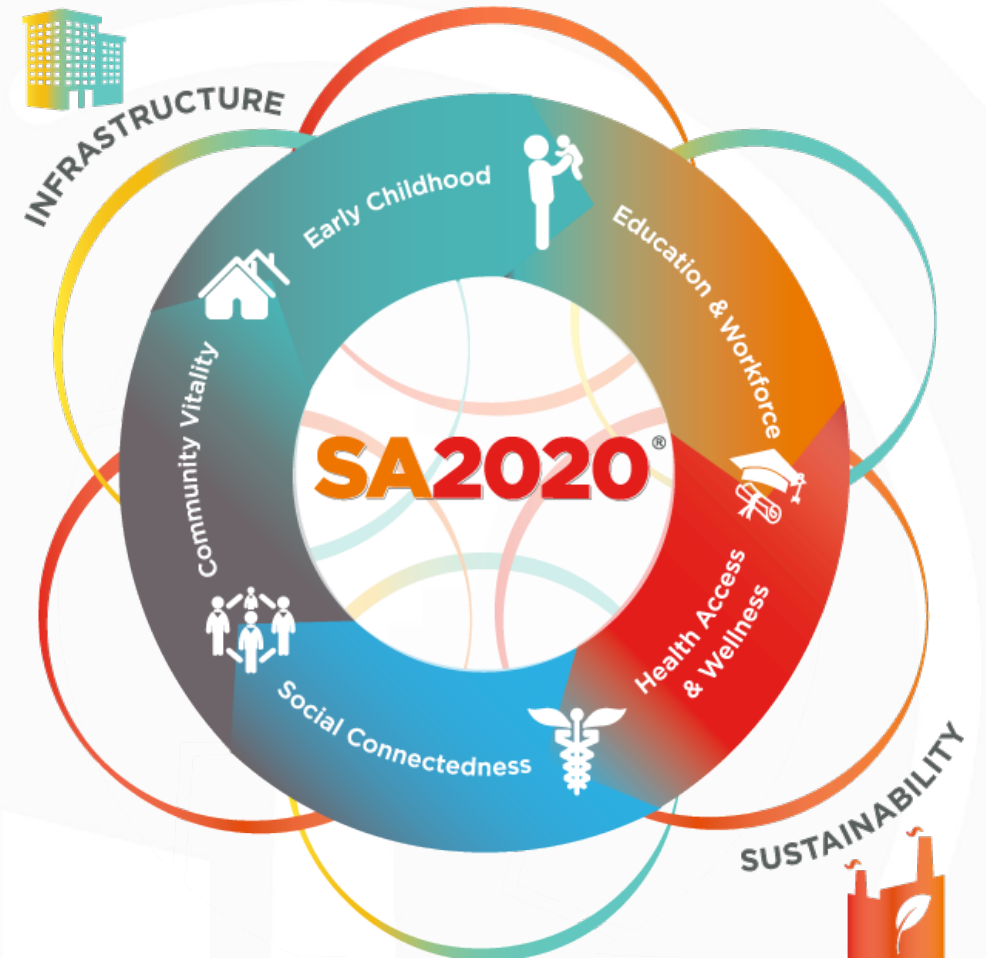


M I G

SA 2020 Visioning

In **2010**, thousands of people in San Antonio gathered around tables to discuss and determine what the future of their city should look like. Together, they prioritized **11 Cause Areas** and created the **SA2020 Vision**:

*“Our residents are amongst the **healthiest** in the nation with access to **quality education and economic opportunity**. San Antonio is the **safest big city** in the U.S. and our neighborhoods are connected with residents that are engaged civically. The city is growing, but is sustaining its natural resources as a **respectful steward**. San Antonio has public transportation that is recognized as a model of efficiency, a **vibrant downtown**, a **diverse and thriving** creative community, and a local government that’s responsive and accountable. Our entire community takes responsibility for our **collective well-being**.”*



The Challenge: Expected Growth



1.7 million
2010

+ 1.1 million

POPULATION

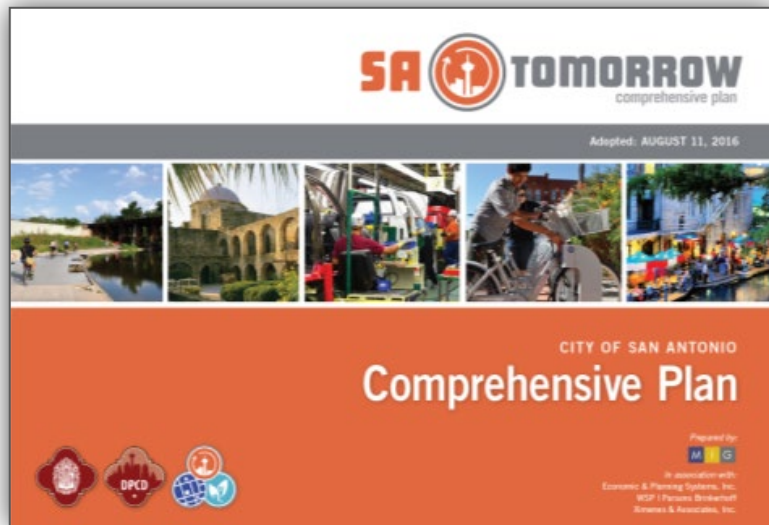
2.8 million
2040



Bexar County

An additional 1.1 million people are forecasted to live in Bexar County between 2010 and 2040.

This means $\frac{1}{2}$ million new housing units and $\frac{1}{2}$ million new jobs.



San Antonio's New Planning Framework



- **Community Plans** - develop actionable strategies for the city's neighborhoods at a manageable and implementable scale.



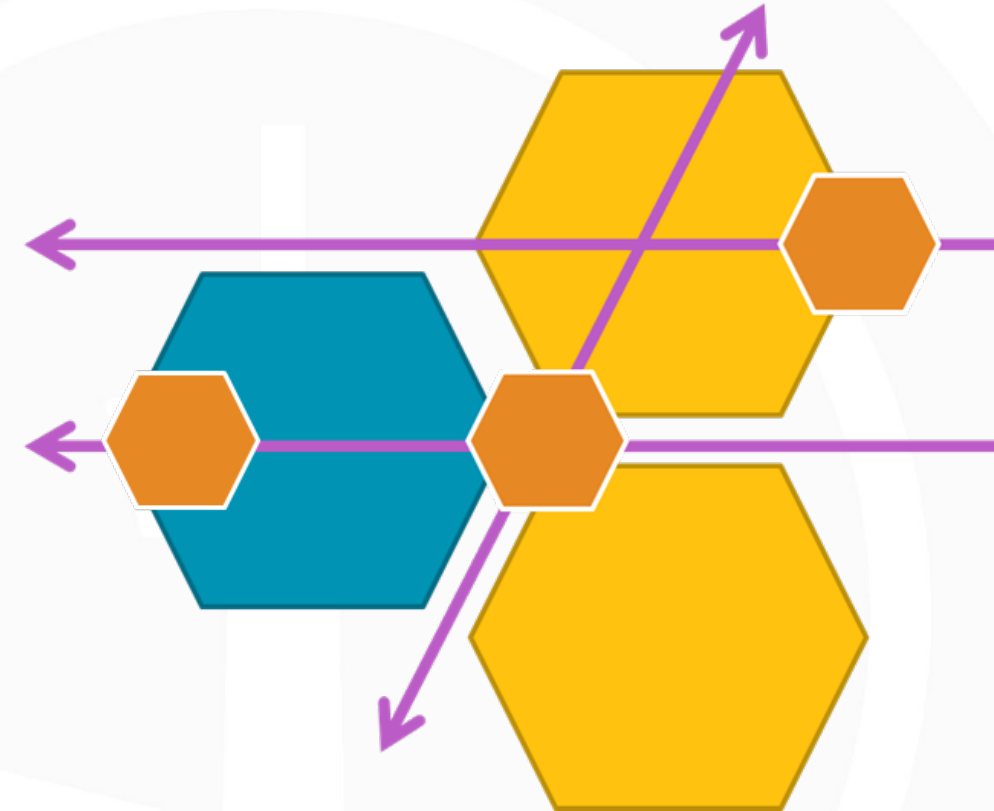
- **Urban Centers** – Central nodes of activity that will be addressed in either Regional Center Plans or Community Plans.



- **Regional Center Plans** – plans for major activity and employment centers in San Antonio.



- **Corridor Plans** – should focus on establishing appropriate and compatible land use and zoning, and key infrastructure needs.





SA



TOMORROW

SA Tomorrow Sub-Area Plans

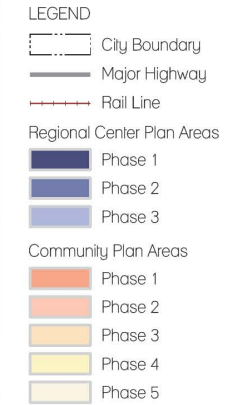
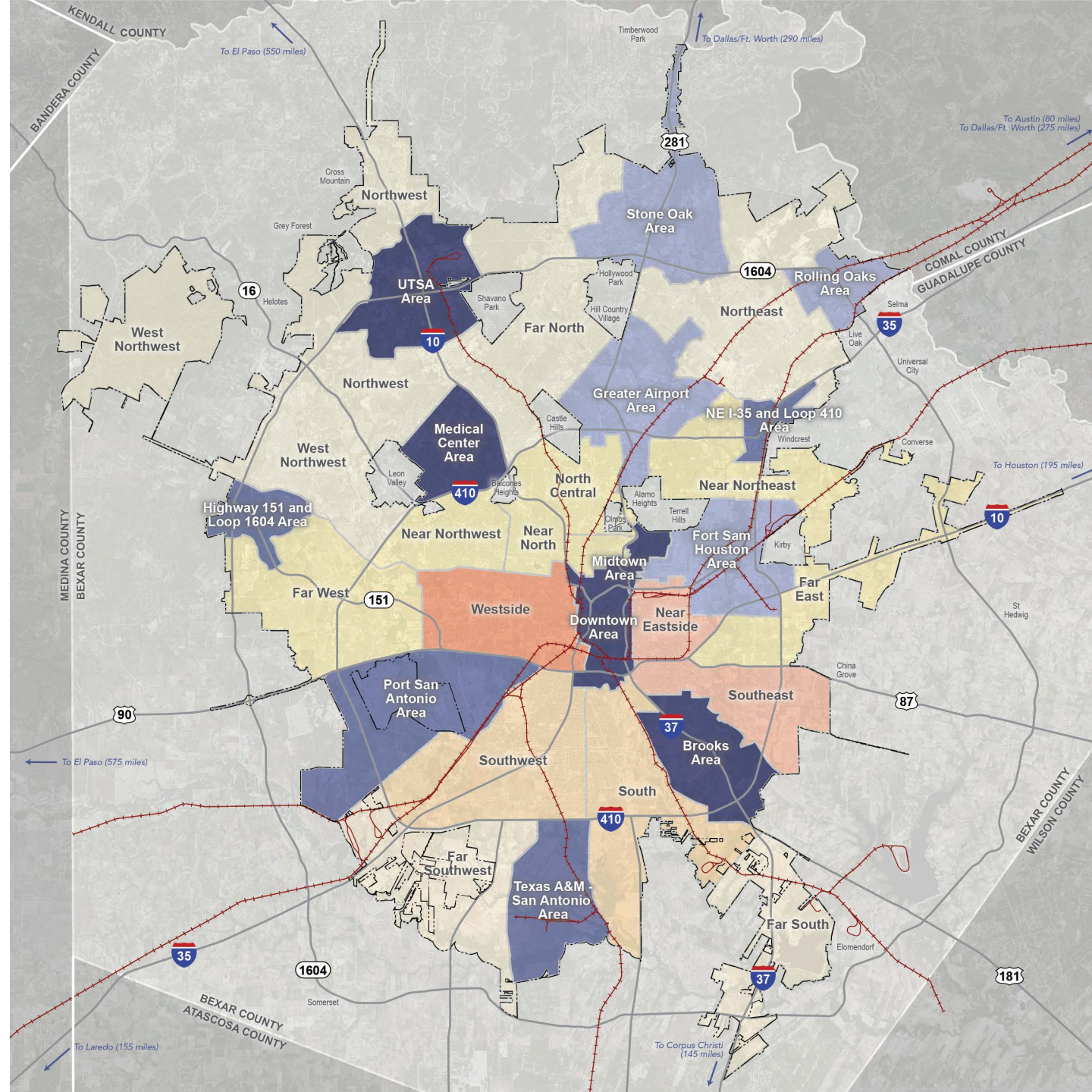


M I G

Sub-Areas: Regional Centers & Community Plan Areas

City-wide Share
in Regional
Centers by
2040:

- **50%** of new jobs
- **20%** of new households



Why Sub-Area Plans?

- Effective and equitable planning for the entire city. In regards to neighborhoods, we recognize that we need to plan for three types of areas:
 1. Registered neighborhoods that are within an adopted land use plan
 2. Registered neighborhoods that are not within any adopted plan
 3. Neighborhoods that are not part of a registered association or within an adopted plan area
- Create a comprehensive and consistent land use map for the entire city.

Implementation

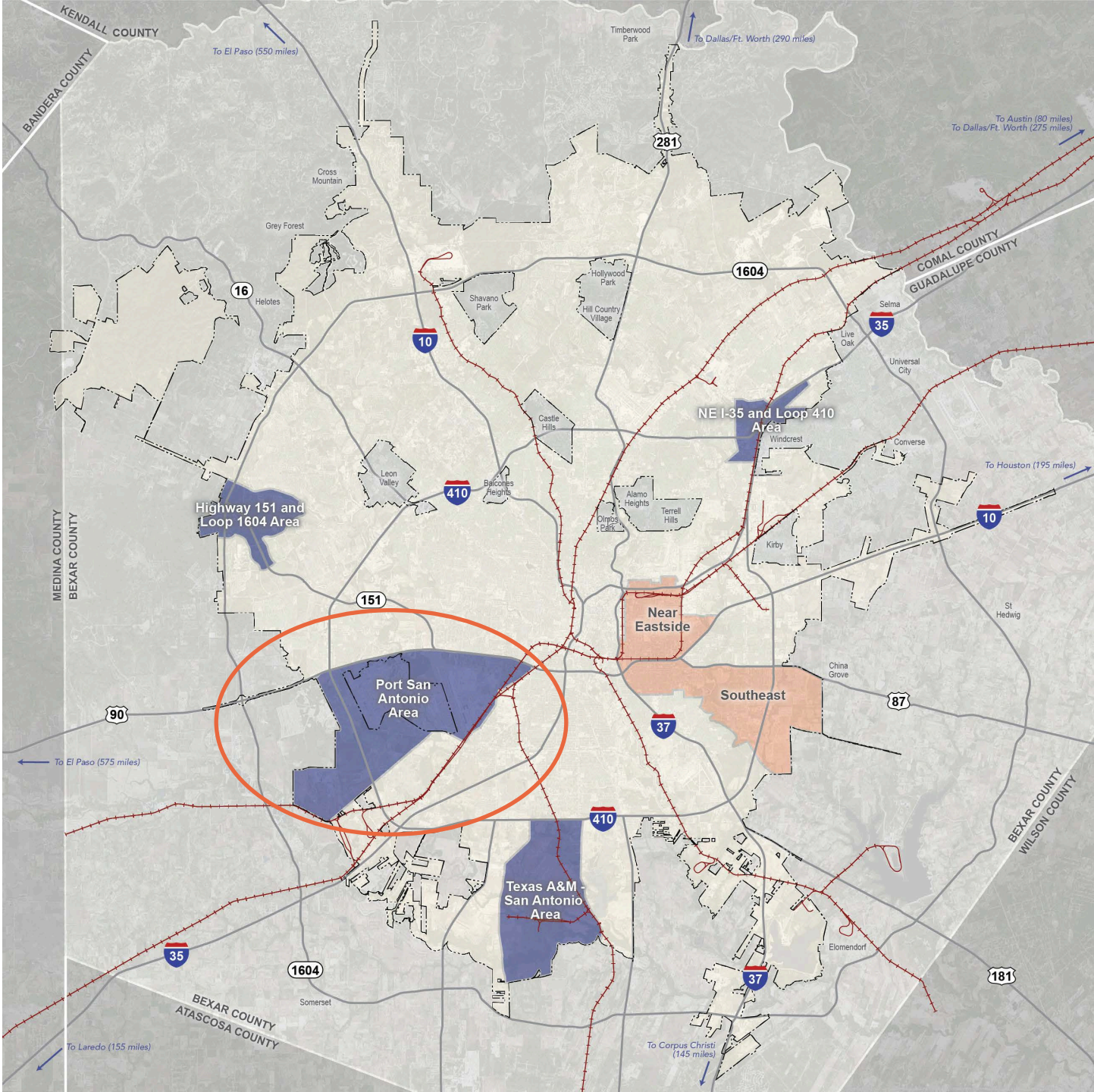
Sub-Area Planning

Sub-Area Plans

Sub-Area Plans are intended to provide a more coordinated, efficient and effective structure for neighborhood planning. Existing and future neighborhood planning will be integrated into the planning for regional centers and community planning areas. Neighborhoods will become integral sub-geographies of these sub-areas while also receiving special attention through chapters and/or sections reflecting specific opportunities, challenges, recommendations and priorities from each participating neighborhood. Neighborhood and community plans should be respected, as appropriate, as they are integrated into the sub-area plans. Following are the three categories of Sub-Area Plans which include: Regional Center Plans; Corridor Plans; and Community Plans.

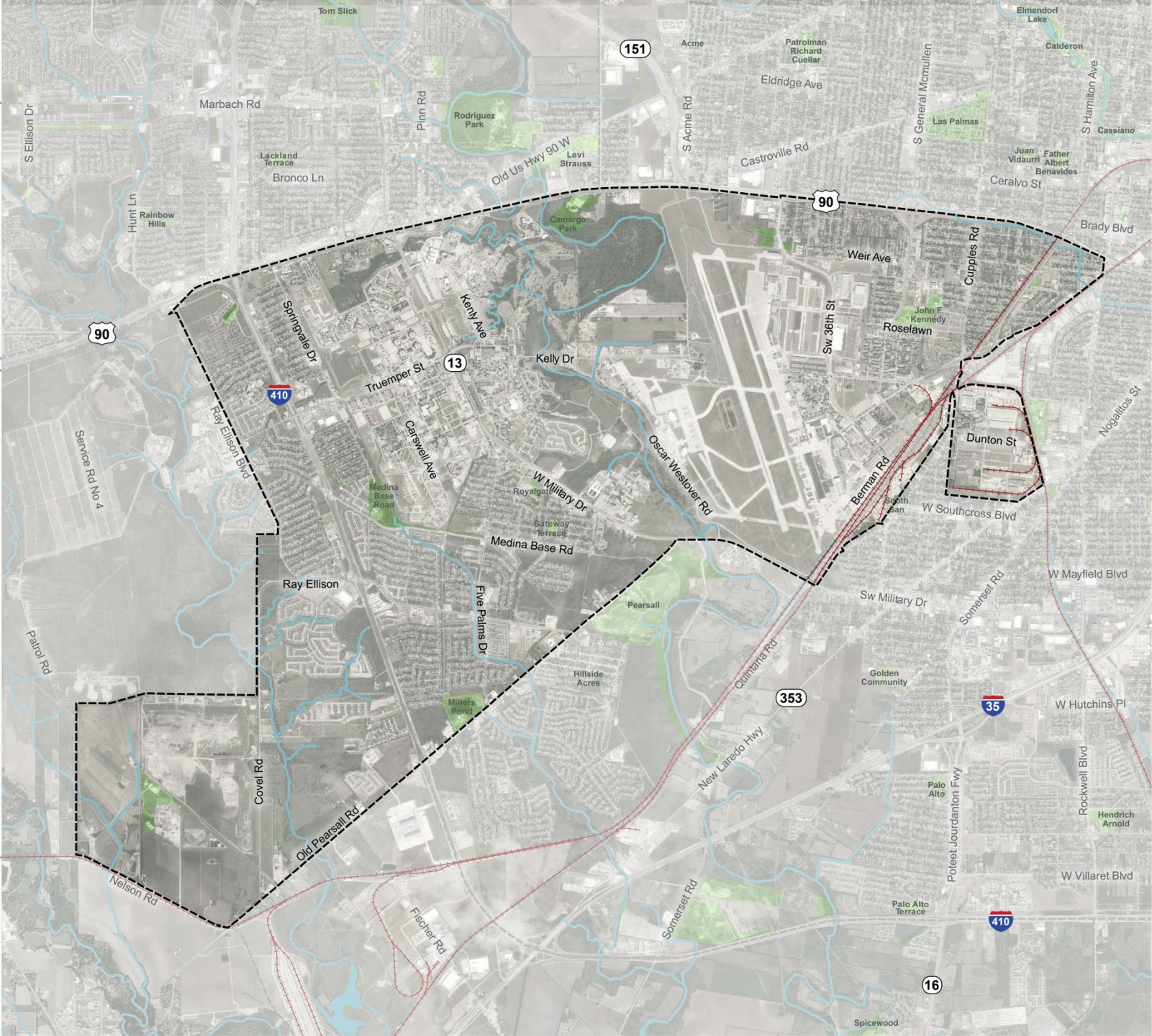
SA Tomorrow Comprehensive Plan, page 17.10

Phase Two Plan Areas



- LEGEND
- City Boundary
 - Major Highway
 - Rail Line
 - Regional Center Plan Areas
 - Phase 1
 - Phase 2
 - Phase 3
 - Community Plan Areas
 - Phase 1
 - Phase 2
 - Phase 3
 - Phase 4
 - Phase 5

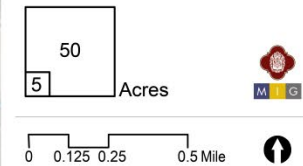
Port San Antonio Area Regional Center



Port San Antonio
REGIONAL CENTER

STUDY AREA

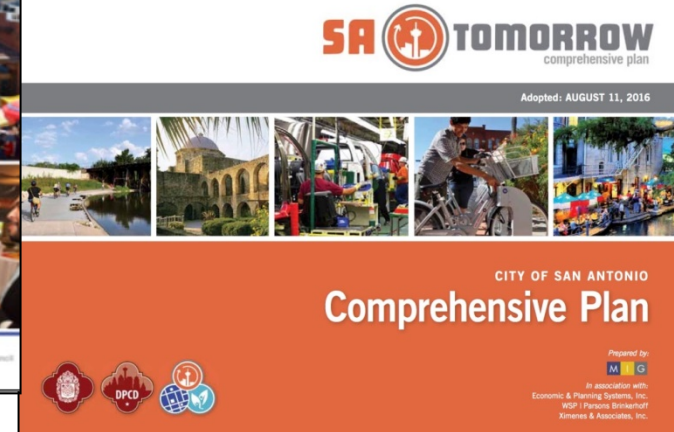
- Regional Center Area Boundary
- Adjacent Regional Center or Community Area
- Public or Private Park or Open Space
- River or Stream
- Railroad Line



Building on Previous Success

SA Tomorrow's Sub-Area Planning builds on and is the continuation of much work to date:

- Neighborhood and Community Plans
- SA 2020
- Corridor Plans and Master Plans
- 2012 and 2017 Bond Projects
- SA Tomorrow Comprehensive Plan, Sustainability Plan, Multimodal Transportation Plan



Kelly / S. San P.U.E.B.L.O Community Plan Update



The initial plan, a partnership between the City Planning Department and the Hidden Cove/ Indian Creek Neighborhood Association, Hillside Acres Good Neighbors, People Active in Community Effort (PACE), the Southwest Community Association (SWCA) and the Valley Forest Neighborhood Association, was adopted August 4, 2005; revision and update adopted June 16, 2011.

Prepared by the Kelly/S. San P.U.E.B.L.O community in partnership with the City of San Antonio Planning and Development Services Department

February 18, 2010

Main Topics

- Existing Conditions
 - Review of Existing Plans
 - Assets, Challenges, and Opportunities
 - Data and Community Insights
- Vision and Goals
- **Plan Framework** →
- Economic Development and Housing Strategies
- Neighborhood Chapters
- Implementation Plan

Plan Framework

Land Use

Transportation and Mobility

Parks, Public Space and Recreation

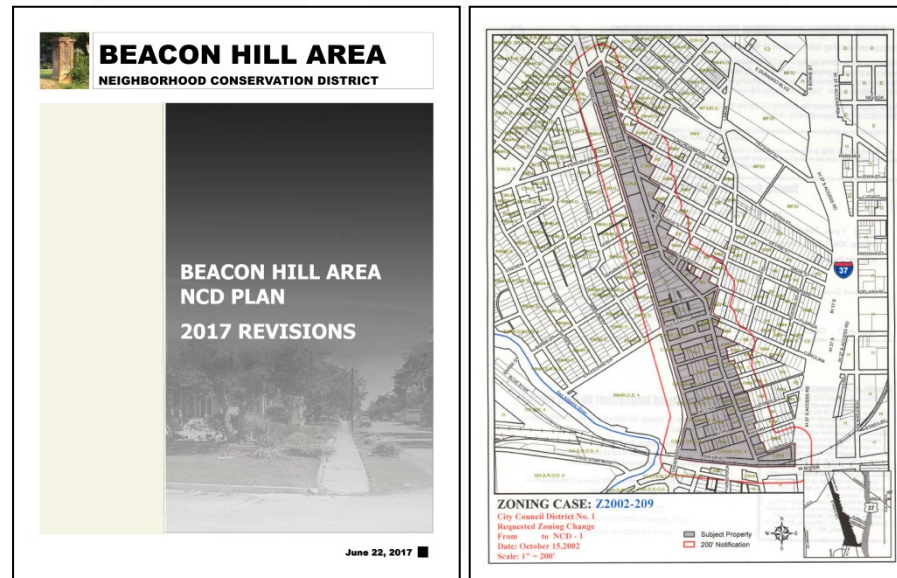
Infrastructure and Amenities

Focus Areas / Corridors

Transformative Projects

Sub-Area Plans do not affect or change:

- Historic District designation/s or design standards
- Neighborhood Conservation District (NCD) designation/s or design standards



Sub-Area Planning Project Phases

1

Analysis & Visioning

Existing conditions; existing plans review; vision and goals; focus areas and corridors; Community Meeting #1

Early 2019

2

Plan Framework

Develop plan elements; focus areas and key corridors; transformative projects; Community Meeting #2

Mid 2019-Early
2020

3

Recommendations & Implementation

Action and phasing strategies; draft Plan elements; Community Meeting #3

Late 2019-
Early 2020

4

Documentation & Adoption

Public Hearings, adoption, final summary and ePlan

Early-Mid 2020

Lasting Impacts

- The **Port SA Area Plan** is intended to:
 - Be **aspirational** and about **thinking big and long-term!**
 - Address Near-, Medium-, and Long-Term projects and programs
 - Guide:
 - **City investments and projects** (require funding, planning, design and construction)
 - **Private investment** (require financing, design, approvals and construction)



SA TOMORROW

Community Engagement and Input

Community Input

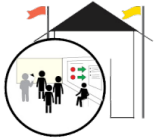
High Touch



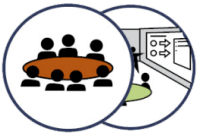
Planning Team Meetings



Neighborhood Group



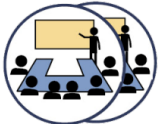
Outreach
Community Workshops /
Open Houses



Stakeholder Focus Groups



Community Drop-in Events



Planning Commission and
City Council

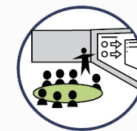
High Tech



ePlan Website for each
Sub-Area



Online Review and
Comment of Draft Plan
Content

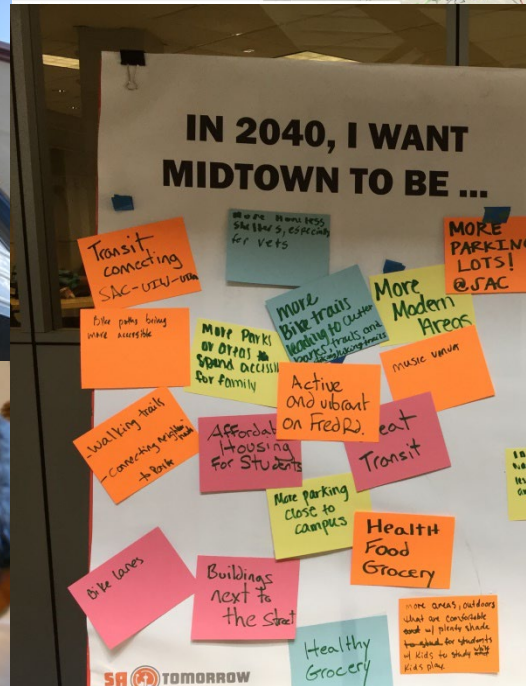
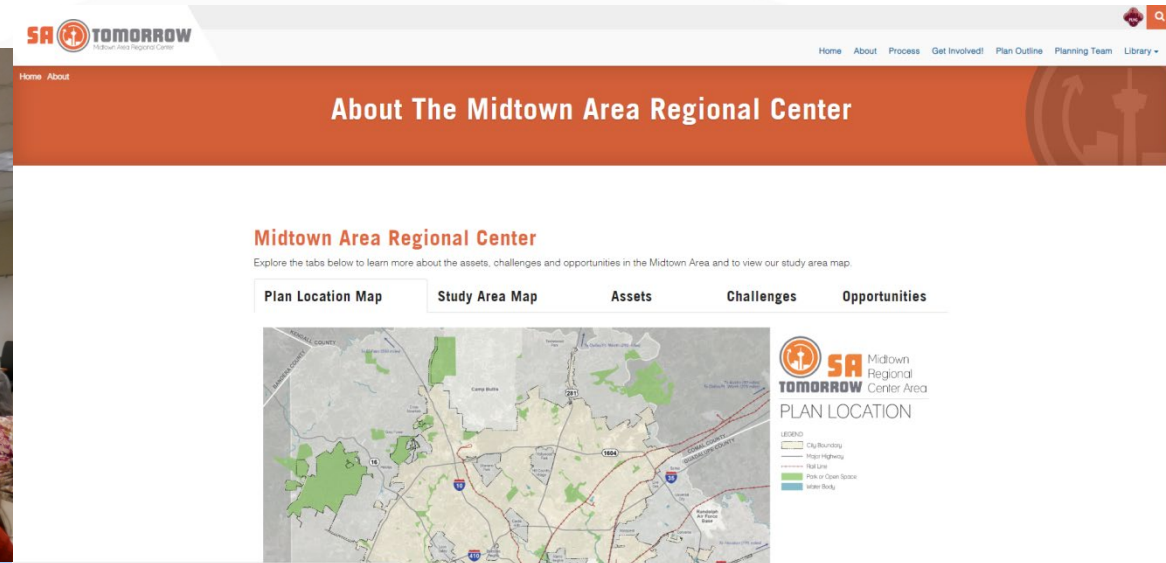


Digital Design Charrettes



Social Media Presence

Community Engagement



SA



TOMORROW

Resources



M I G

Port San Antonio Regional Center Plan Website

<https://portsanantonio.sacompplan.com>



- Please sign up for email updates and meeting notifications
- Upcoming meetings and events will be posted on our **Get Involved!** page

Visioning Questionnaire

<https://www.surveymonkey.com/r/PortSAQ1>



- Please take our Visioning Questionnaire
- Four easy questions to share your views about your community
- Help us spread the word – send the questionnaire QR code and website addresses to your family, friends, and neighbors!

Other Resources

- www.satomorrow.com
- www.sacompplan.com
- www.sacorridors.com
- www.sanantonio.gov/planning



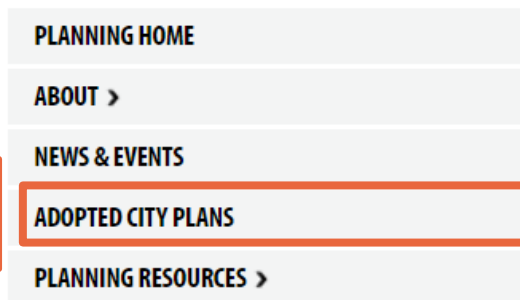
3 Steps to look up a Neighborhood or Community Plan:

1

<https://www.sanantonio.gov/Planning>



2



ADOPTED CITY PLANS



A-F

- [Alamodome Neighborhood Plan \(1993\)\(PDF\)](#)
- [Arena District/ Eastside Community Plan \(2003\)\(PDF\)](#)
- [Camelot 1 Neighborhood Plan \(2004\)\(PDF\)](#)
- [Camelot 1 Neighborhood Plan \(2010\)\(PDF\)](#)
- [City South Community Plan \(2003\)\(PDF\)](#)
- [Dignowity Hill Neighborhood Plan/ Eastside Reinvestment Plan \(2009\)\(PDF\)](#)
- [Downtown Neighborhood Plan \(1999\)\(PDF\)](#)
- [Downtown West Neighborhood Plan \(2009\)\(PDF\)](#)
- [Eastern Triangle Community Plan \(2009\)\(PDF\)](#)
- [Five Points Neighborhood Plan \(2000\)\(PDF\)](#)
- [Five Points Neighborhood Plan \(2009\)\(PDF\)](#)

G-I

- [Government Hill Neighborhood Plan \(2001\)\(PDF\)](#)
- [Government Hill Neighborhood Plan \(2010\)\(PDF\)](#)

3

COMMUNITY DEVELOPMENT PLANS

COMMUNITY & NEIGHBORHOOD PLANS

MASTER PLAN

POLICIES & SPECIAL STUDIES

SECTOR PLANS

Questions & Comments

Channary Gould, City of San Antonio
chan.gould@sanantonio.gov





Port San Antonio Area Regional Center Community Meeting #1

City of San Antonio
Planning Department
SA Tomorrow Planning Initiatives

January 29, 2019



Auxiliary Marketing Services
Bowtie
Cambridge Systematics, Inc.
Economic & Planning Systems, Inc.
Mosaic Planning and Development Services
Ximenes & Associates

